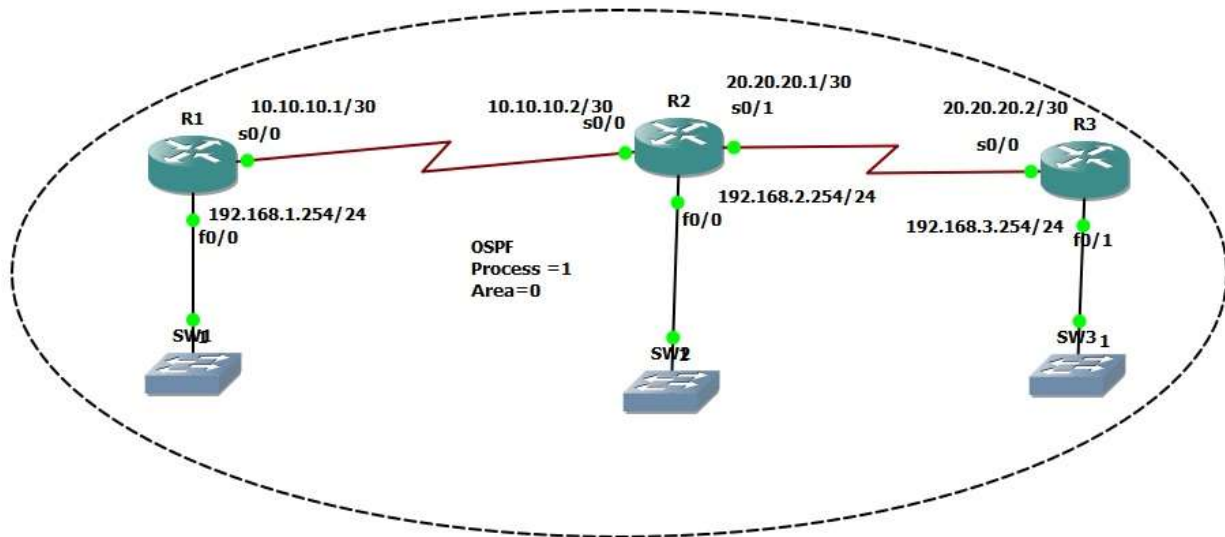




## Lab 15 – OSPF-Authentication



```
R1(config)#interface s0/0
```

```
R1(config-if)#ip ospf authentication
```

```
R1(config-if)#ip ospf authentication-key jodoi12
```

```
R2(config)#interface s0/0
```

```
R2(config-if)#ip ospf authentication-key jodoi12
```

```
R2(config)#router ospf 1
```

```
R2(config-router)#area 0 authentication
```

R1#show ip route ospf

20.0.0.0/30 is subnetted, 1 subnets

- O 20.20.20.0 [110/259] via 10.10.10.2, 00:00:47, Serial0/0
- O 192.168.2.0/24 [110/205] via 10.10.10.2, 00:00:47, Serial0/0
- O 192.168.3.0/24 [110/269] via 10.10.10.2, 00:00:47, Serial0/0

R1(config)#interface s0/0

R1(config-if)#no ip ospf authentication-key jodoi12

R1(config-if)#ip ospf authentication-key jodoi123

R1#debug ip ospf adj

OSPF adjacency events debugging is on

\*Mar 1 00:13:13.483: OSPF: Rcv pkt from 10.10.10.2,

Serial0/0 : Mismatch Authentication Key - Clear Text

\*Mar 1 00:14:02.383: OSPF: 2 Way Communication to 192.168.2.254 on Serial0/0, state 2WAY

\*Mar 1 00:14:02.383: OSPF: Send DBD to 192.168.2.254 on Serial0/0 seq 0x1188 opt 0x52 flag 0x7 len 32

\*Mar 1 00:14:02.383: OSPF: Rcv DBD from 192.168.2.254 on Serial0/0 seq 0x134B opt 0x52 flag 0x7 len 32

mtu 1500 state EXSTART

\*Mar 1 00:14:02.383: OSPF: NBR Negotiation Done. We are the SLAVE

\*Mar 1 00:14:02.383: OSPF: Send DBD to 192.168.2.254 on Serial0/0 seq 0x134B opt 0x52 flag 0x2 len 92

\*Mar 1 00:14:02.383: OSPF: Rcv DBD from 192.168.2.254 on Serial0/0 seq 0x134C opt 0x52 flag 0x3 len 92

```
R2(config)#interface s0/0
```

```
R2(config-if)#ip ospf authentication-key jodoi123
```

```
R2(config)#interface s0/1
```

```
R2(config-if)#ip ospf authentication-key jodoi12
```

```
R2(config)#router ospf 1
```

```
R2(config-router)#area 0 authentication
```

```
R3(config)#interface s0/0
```

```
R3(config-if)#ip ospf authentication
```

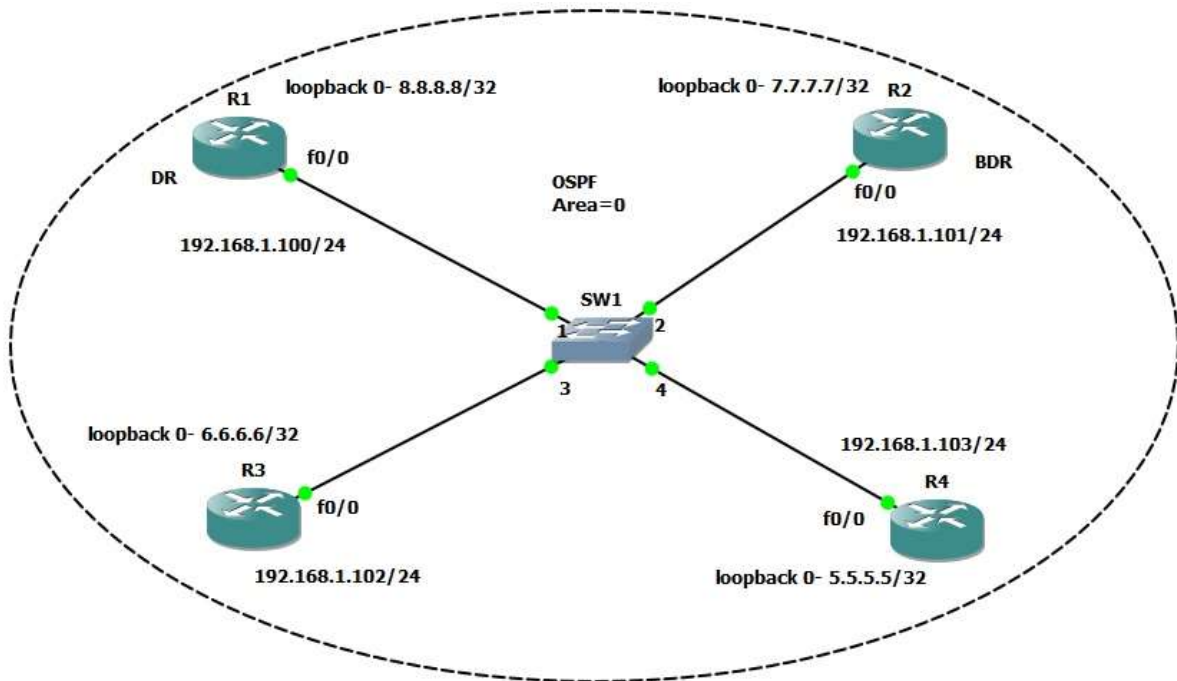
```
R3(config-if)#ip ospf authentication-key jodoi12
```

```
R1#show ip route ospf
```

```
20.0.0.0/30 is subnetted, 1 subnets
```

- O 20.20.20.0 [110/259] via 10.10.10.2, 00:00:47, Serial0/0
- O 192.168.2.0/24 [110/205] via 10.10.10.2, 00:00:47, Serial0/0
- O 192.168.3.0/24 [110/269] via 10.10.10.2, 00:00:47, Serial0/0

## Lab 16 – OSPF-DR& BDR



```
R1(config)#router ospf 1
```

```
R1(config-router)#network 192.168.1.0 0.0.0.255 area 0
```

```
R1(config-router)#network 8.8.8.8 0.0.0.0 area 0
```

```
R2(config)#router ospf 1
```

```
R2(config-router)#network 192.168.1.0 0.0.0.255 area 0
```

```
R2(config-router)#network 7.7.7.7 0.0.0.0 area 0
```

```
R3(config)#router ospf 1
```

```
R3(config-router)#network 192.168.1.0 0.0.0.255 area 0
```

```
R3(config-router)#network 6.6.6.6 0.0.0.0 area 0
```

```
R4(config)#router ospf 1
```

```
R4(config-router)#network 192.168.1.0 0.0.0.255 area 0
```

```
R4(config-router)#network 5.5.5.5 0.0.0.0 area 0
```

```
R1#show ip ospf neighbor
```

Neighbor ID	Pri	State	Dead Time	Address	Interface
5.5.5.5	1	FULL/DROTHER	00:00:33	192.168.1.103	FastEthernet0/0
6.6.6.6	1	FULL/DROTHER	00:00:36	192.168.1.102	FastEthernet0/0
7.7.7.7	1	FULL/BDR	00:00:36	192.168.1.101	FastEthernet0/0

```
R2#show ip ospf neighbor
```

Neighbor ID	Pri	State	Dead Time	Address	Interface
5.5.5.5	1	FULL/DROTHER	00:00:36	192.168.1.103	FastEthernet0/0
6.6.6.6	1	FULL/DROTHER	00:00:39	192.168.1.102	FastEthernet0/0
8.8.8.8	1	FULL/DR	00:00:34	192.168.1.100	FastEthernet0/0

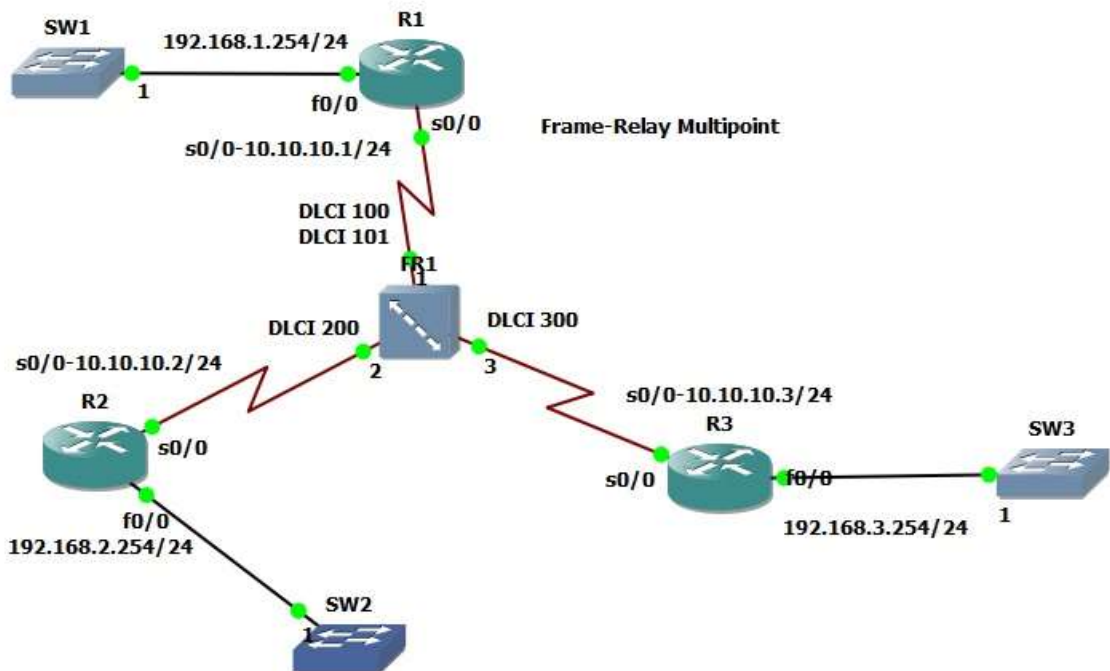
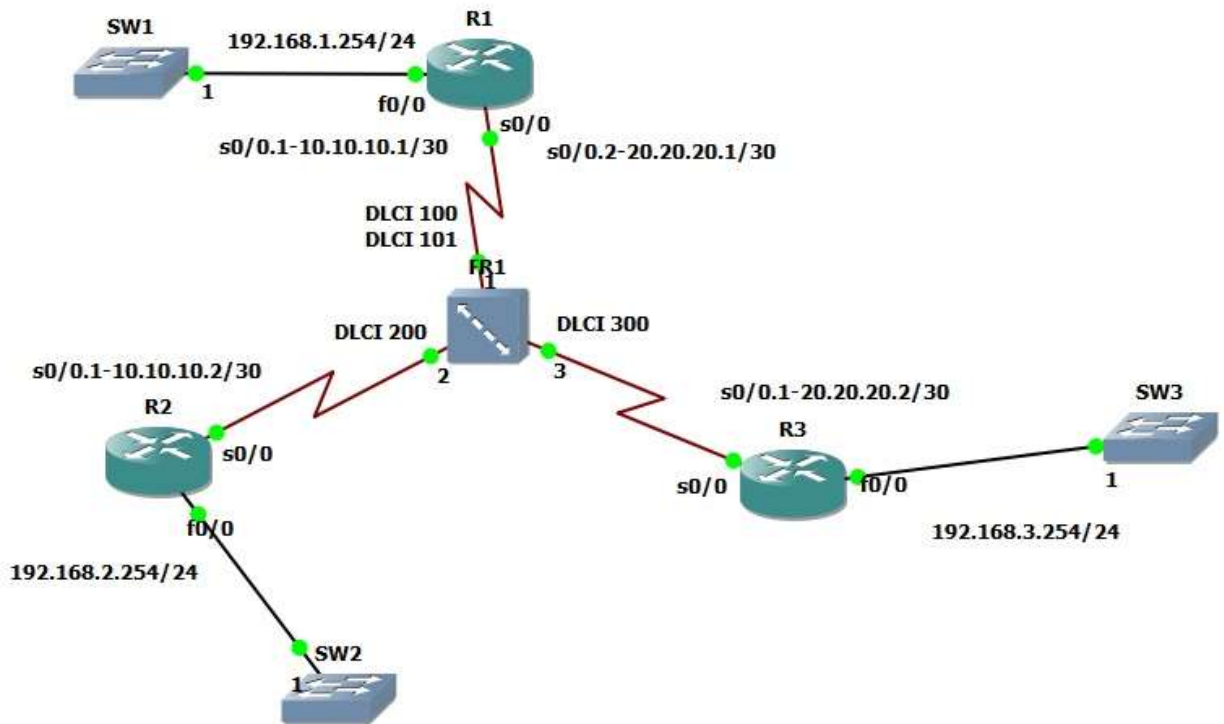
```
R3#show ip ospf neighbor
```

Neighbor ID	Pri	State	Dead Time	Address	Interface
5.5.5.5	1	2WAY/DROTHER	00:00:36	192.168.1.103	FastEthernet0/0
7.7.7.7	1	FULL/BDR	00:00:38	192.168.1.101	FastEthernet0/0
8.8.8.8	1	FULL/DR	00:00:34	192.168.1.100	FastEthernet0/0

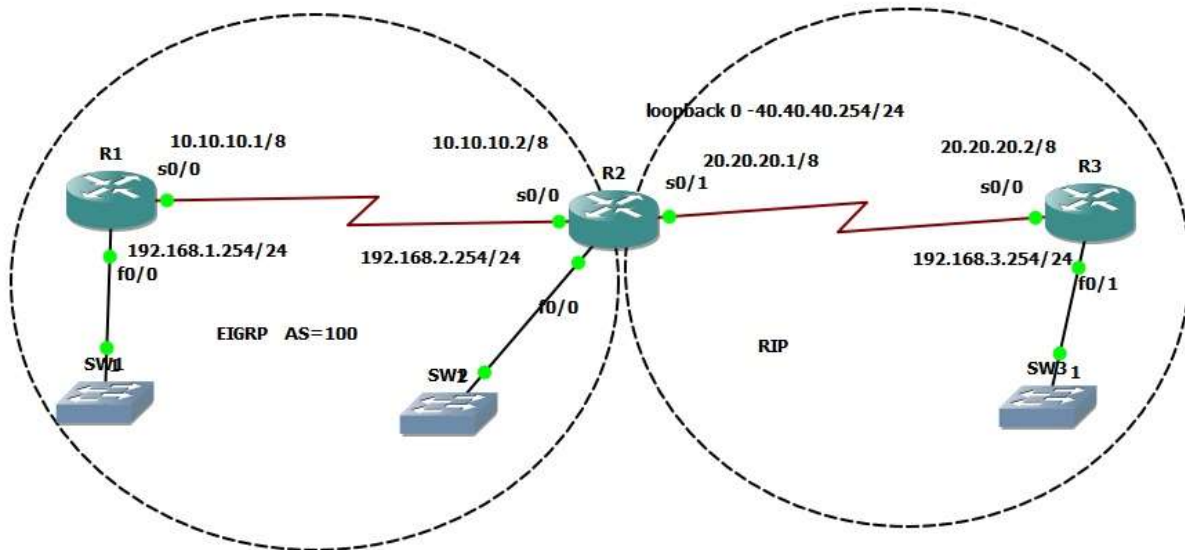
```
R4#show ip ospf neighbor
```

Neighbor ID	Pri	State	Dead Time	Address	Interface
6.6.6.6	1	2WAY/DROTHER	00:00:31	192.168.1.102	FastEthernet0/0
7.7.7.7	1	FULL/BDR	00:00:31	192.168.1.101	FastEthernet0/0
8.8.8.8	1	FULL/DR	00:00:36	192.168.1.100	FastEthernet0/0

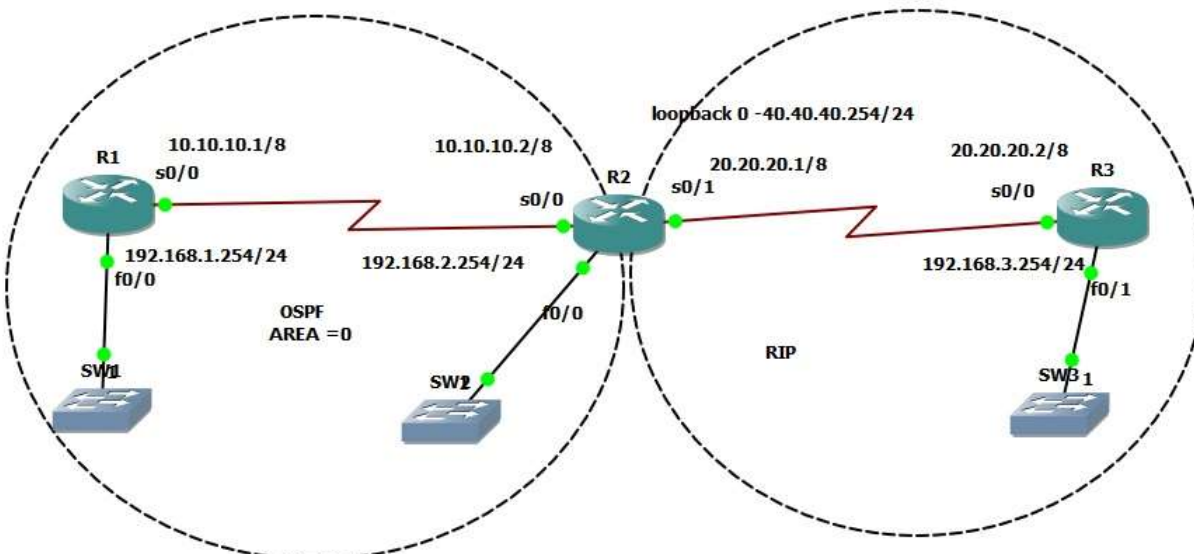
# Lab 17 – OSPF-Frame-Relay



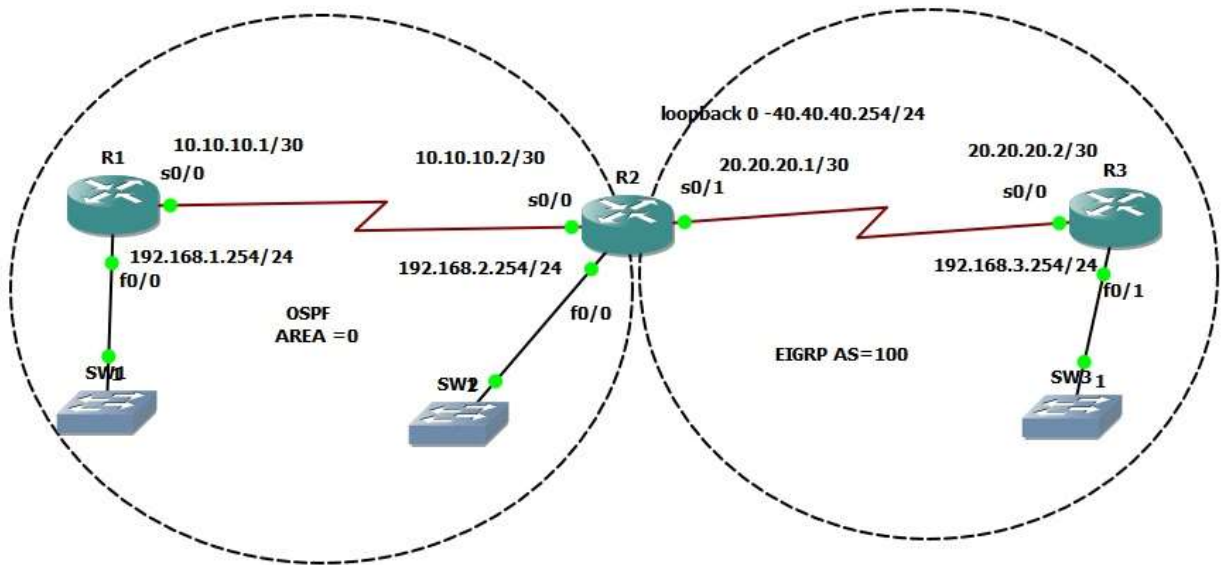
## Lab 18 – Redistribute EIGRP & RIP



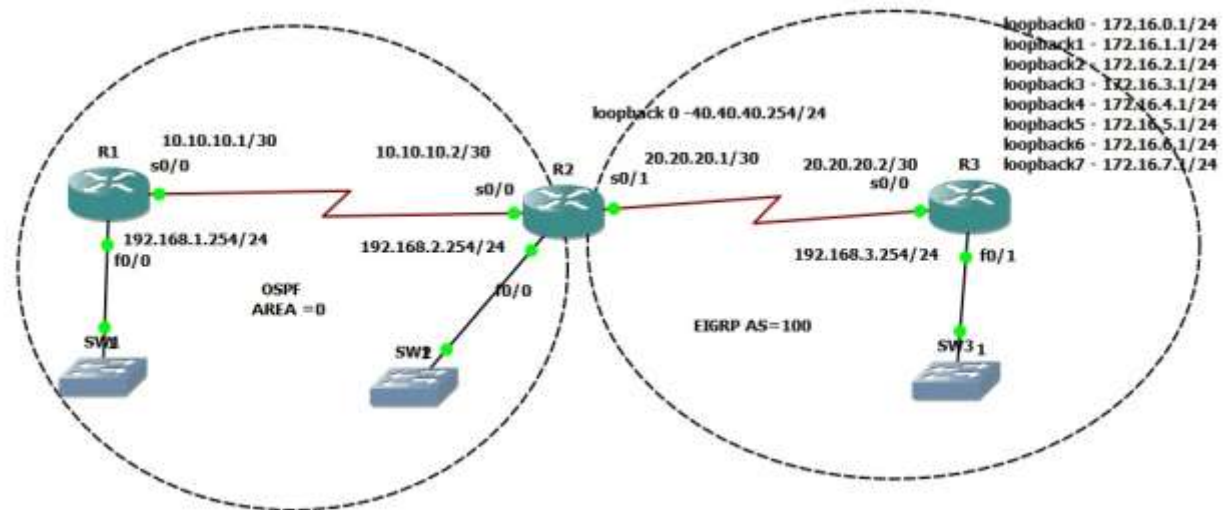
## Lab 19 – Redistribute OSPF & RIP



# Lab 20 – Redistribute OSPF & EIGRP



# Lab 21 – Distribute-List



# Lab 22 – Prefix-List

( Network Diagram Based On Lab 22 )



สนใจสมัครสมาชิกโครงการ เรียน Online กับอาจารย์เกรียงศักดิ์ นามโคตร (อาจารย์ดอย) มีรายละเอียด ตาม link นี้จะครับ  
[http://www.jodoi.org/Online\\_by\\_ajdoi.pdf](http://www.jodoi.org/Online_by_ajdoi.pdf)

และจะมีการสร้าง Username เพื่อเข้าสู่ระบบให้ โดยใช้ Link นี้เป็นหลัก <http://ajdoi.jodoi.org/>



จัดทำโดย อาจารย์เกรียงศักดิ์ นามโคตร (Mr.Jodoi)

<http://www.jodoi.org> , <http://www.jodoi.com>

[jodoi@jodoi.com](mailto:jodoi@jodoi.com)