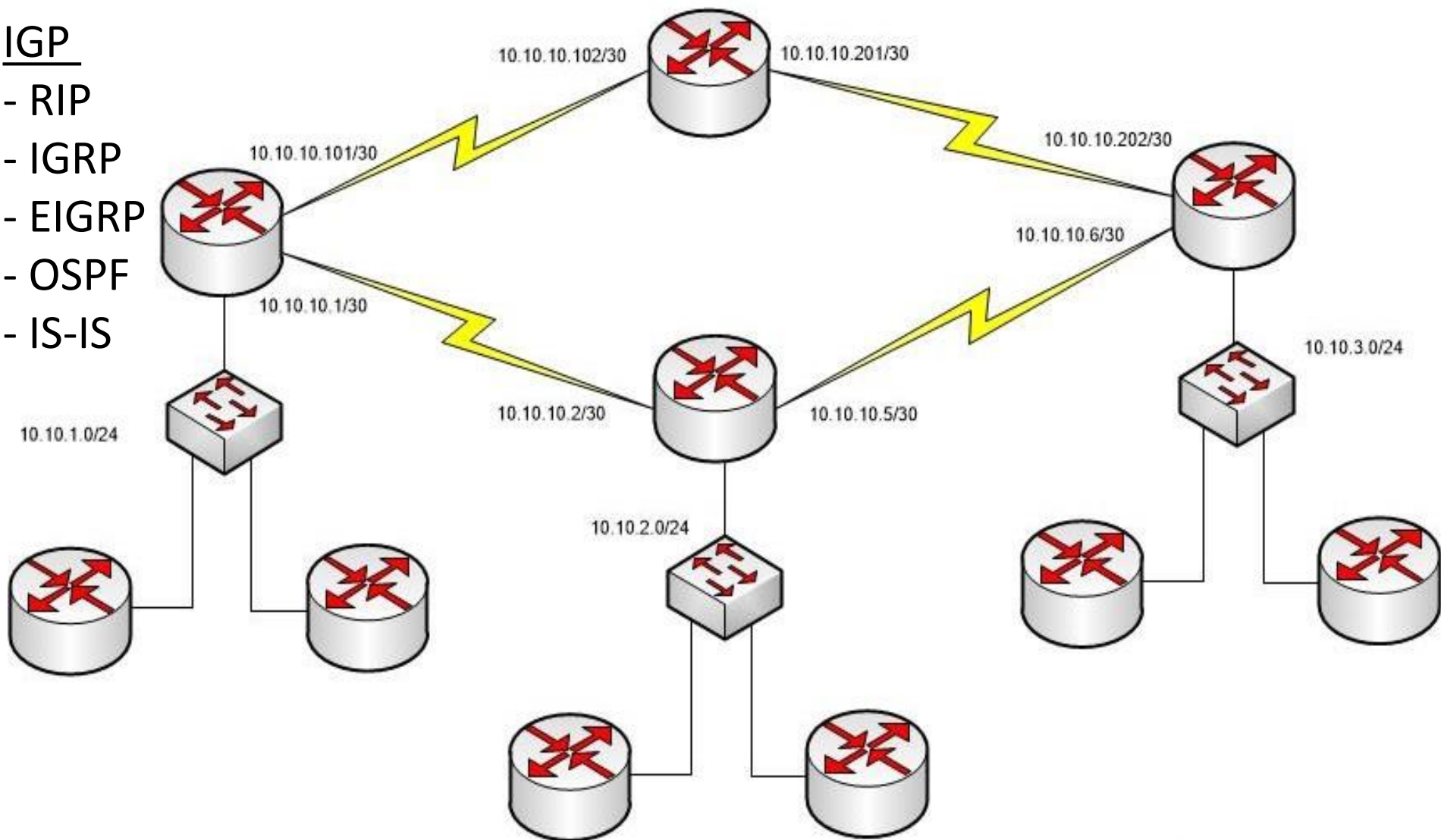


Dynamic Route

IGP

- RIP
- IGRP
- EIGRP
- OSPF
- IS-IS



Dynamic Route

RIP (Routing Information Protocol)

```
Router(config)# router rip
```

```
Router(config-router)# network ip-address(major-network)
```

```
Router(config-router)# version {1 | 2}
```

```
Router(config-router)# no auto-summary
```

Ex

```
Jodoi-Router(config)# router rip
```

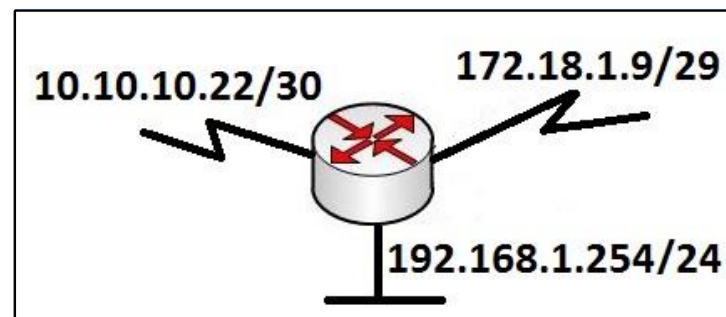
```
Jodoi-Router(config-router)# network 10.0.0.0
```

```
Jodoi-Router(config-router)# network 172.18.0.0
```

```
Jodoi-Router(config-router)# network 192.168.1.0
```

```
Jodoi-Router(config-router)# version 2
```

```
Jodoi-Router(config-router)# no auto-summary
```

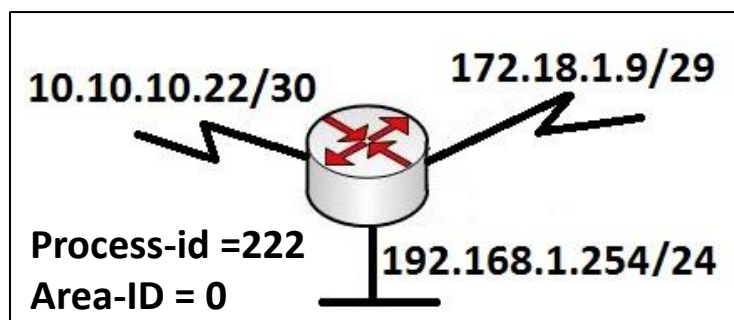


Dynamic Route

OSPF (Open Shortest Path First)

```
Router(config)# router ospf (process-id)
```

```
Router(config-router)# network (ip-address) (wildcard-mask) area (area-id)
```



Ex

```
Jodoi-Router(config)# router ospf 222
```

```
Jodoi-Router(config-router)# network 192.168.1.0 0.0.0.255 area 0
```

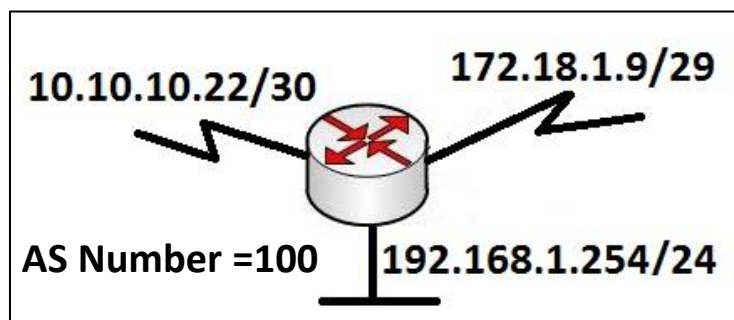
```
Jodoi-Router(config-router)# network 10.10.10.20 0.0.0.3 area 0
```

```
Jodoi-Router(config-router)# network 172.18.1.8 0.0.0.7 area 0
```

Dynamic Route

EIGRP (Enhanced Interior Gateway Routing Protocol)

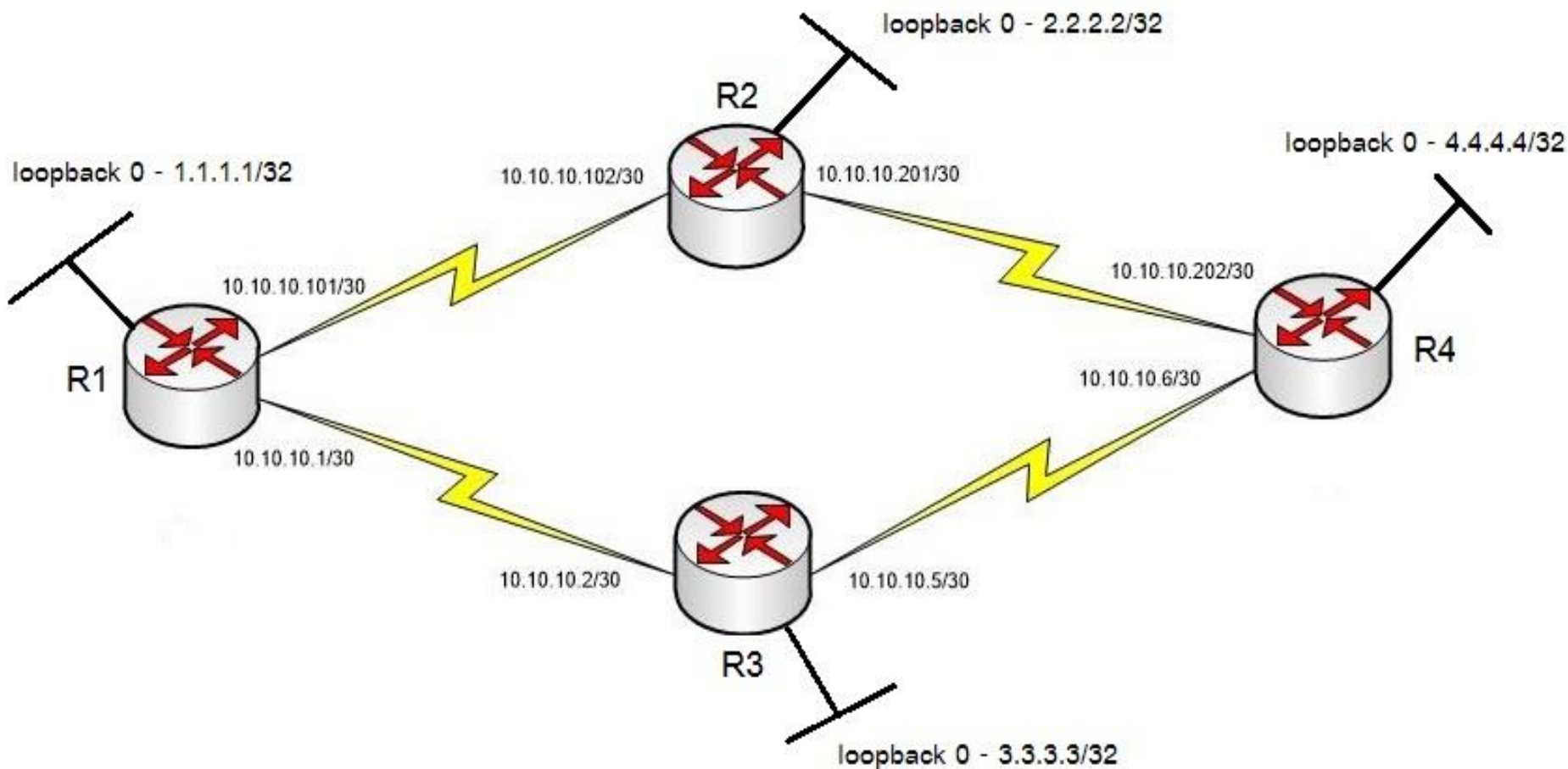
```
Router(config)# router eigrp (autonomous-system)
Router(config-router)# network ip-address(major-network)
Router(config-router)# no auto-summary
```



Ex

```
Jodoi-Router(config)# router eigrp 100
Jodoi-Router(config-router)# network 10.0.0.0
Jodoi-Router(config-router)# network 172.18.0.0
Jodoi-Router(config-router)# network 192.168.1.0
Jodoi-Router(config-router)# no auto-summary
```

Lab Dynamic Route



1) Configure Dynamic Route (EIGRP → AS= 100)